



# Mobile Commercial Service

Canada's largest, most reliable  
service network. On the go,  
where and when you need us.

With over 270 stores and more than 500 highly skilled technicians and specially outfitted service trucks, Kal Tire has the network, people, expertise and equipment to keep customers rolling 24-hours a day, every day.

Our service operations team manages the deployment of Kal Tire technicians and specialized commercial trucks to breakdown events and scheduled work across all major metropolitan markets\*. This enables us to efficiently dispatch the right technician at the right time. Customers can provide multiple people with online, real-time access to track the status and completion of each job.



**270+**  
Stores



**500 Service  
Trucks**



**24 Hours/  
7 Days a Week**

\*Speak to a Kal Tire representative for current list of markets served, as additional locations continue to be added.

\*\*Response times of under 5 minutes when requesting service via our digital platform

## At-A-Glance

### Features

- ✓ Largest fleet of mobile service trucks in Canada
- ✓ Highly trained technicians committed to safety & efficiency
- ✓ Instant access online to all work performed at your site or roadside
- ✓ Scheduled service work at your site
- ✓ Accurate arrival times that you can verify
- ✓ Centralized reporting of service performance metrics
- ✓ Electronic billing integration across multiple data formats

### Benefits

- ✓ Real-time access to every service event at your site or roadside
- ✓ Reduce your downtime with quick emergency service response times of under 5 minutes\*\*
- ✓ Manage your fleet's capacity & routes with real-time visibility into the status of breakdown events
- ✓ Minimize downtime with preventative maintenance work scheduled at your site on your timeline
- ✓ Reduce administrative costs through electronic billing integration, available for high volume customers

**Commercial.KalTire.com**



# Trust Kal Tire's Mobile Commercial Services to Keep You Rolling

At your site or on the go, we're here when you need us.

## ✓ Emergency roadside service 24/7

- Accurate ETA's and under 5 minute response times with teams that can assess technician location, availability & skills to deploy the best resource to your need
- Quick & easy emergency service request via our digital platform
- A centralized, in-house, after-hours dispatch team ensures fast response times
- Automated real-time event notifications which are role specific for service requestor, driver & fleet manager, sent at key stages during the service and sharing key event details such as photos and summaries
- Driver GPS locator — dispatchers send the customer's driver an SMS to capture coordinates of breakdown location, eliminating location errors

## ✓ Real-time access to every service event at your site or on the road

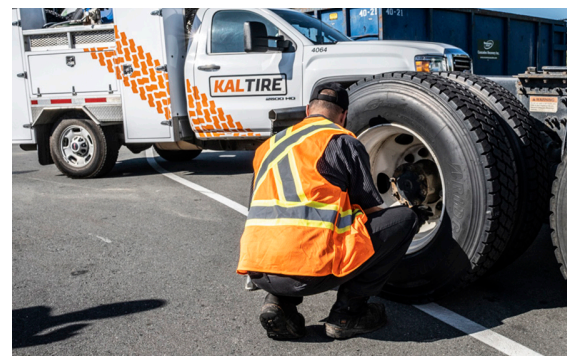
- Service events are shareable to multiple stakeholders who can message/comment while the event is in progress
- Get real-time updates from the technician while the event is in progress
- Photo documentation of tire damage is shared in the summary
- A record of the work completed is available immediately upon completion of the job

## ✓ Minimize down-time with preventative maintenance work scheduled at your site on your timeline

- Schedule tire work for multiple vehicles when equipment is idle
- Enhanced reporting on all work completed to aid your maintenance program

## ✓ Access to Canada's largest fleet of commercial service trucks & technicians

- All Kal Tire technicians have completed comprehensive commercial technical & safety training
- All technicians complete on-site, digital, hazard inspections
- Commercial service trucks are outfitted with specialized equipment to ensure efficiency & safety utilizing the correct tools for the job



**Learn more** We're ready to help keep your fleet rolling. **To learn more about our mobile commercial services, contact your sales representative or call 1-844-525-7761.**

